

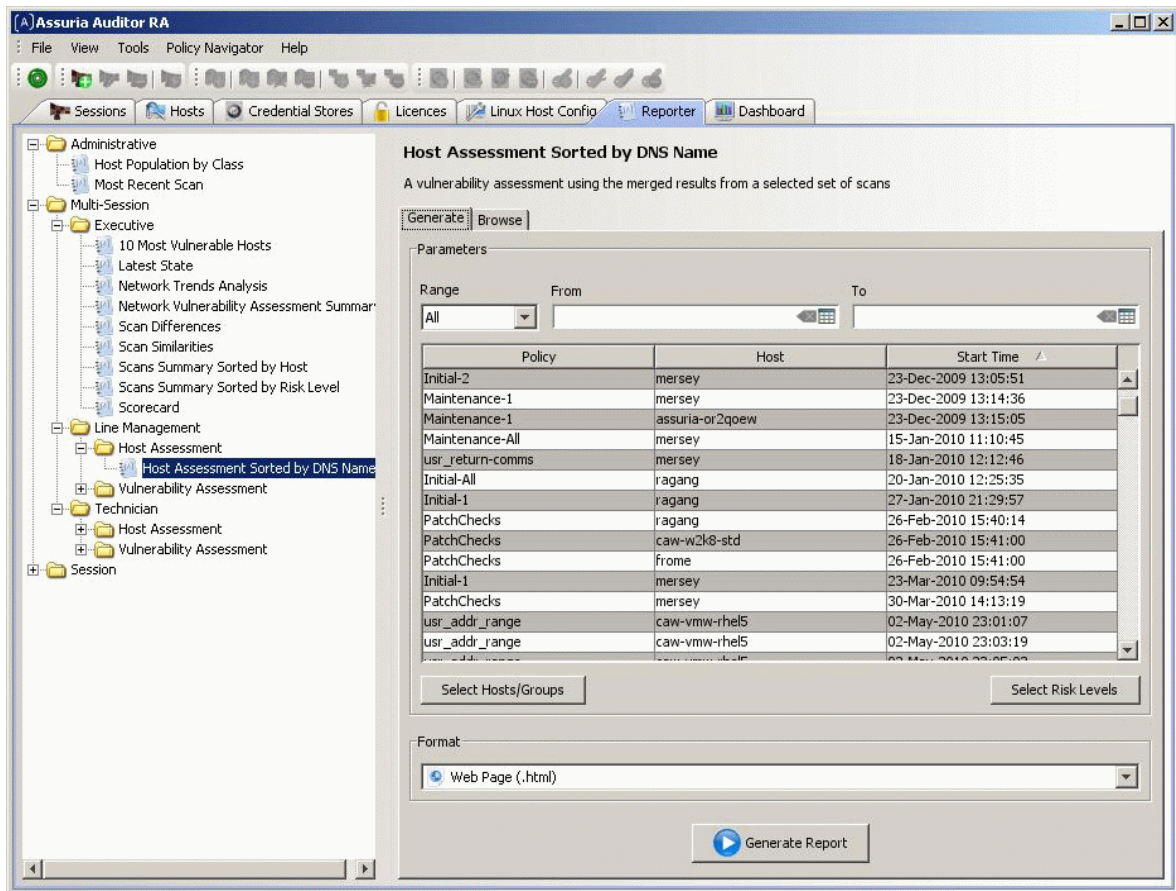
# assuria bulletin

**Title:** Assuria Auditor RA version 1.5 released.  
**Number:** 10-18 **Date:** 8th July 2010

**Title** Assuria Auditor RA version 1.5 released.

**Introduction** This Bulletin announces the latest version of Assuria Auditor RA which is generally available for download from AssuriaOnline. The Assuria Auditor RA technology enables remote agent-less scanning using the same checks and policies as the Assuria Auditor agents.

**New features** Assuria Auditor RA version 1.5 introduces integrated reporting using a new Assuria reporter 'engine'.  
When using Assuria Auditor RA it is no longer necessary to revert to the classic Assuria Auditor Console to create reports from the Assuria Auditor RA scans. Reports are fully compatible with current Assuria Auditor reports.  
Use of the new reporter is described within the Assuria Auditor RA Users Guide.



Assuria Auditor RA – Reporter tab

<b>Changes to Linux host configuration settings</b>	<p>A change was made in Assuria Auditor RA Release 1.4 to the way in which configuration information is processed for Linux hosts.</p> <p>If you are updating from Release 1.3 it is recommended, but not essential, that 'Get configuration' be re-run for all Red Hat Enterprise Linux hosts.</p>
<b>Security Content</b>	<p>The check and policy content in release 1.5 of Assuria Auditor RA is based on the content used for host based scanning with Windows and Red Hat Enterprise Linux agents updated to AutoUpdate #104 level.</p>
<b>Concurrent Scans</b>	<p>Assuria Auditor RA has been configured to run a maximum of 2 concurrent scans by default, although this figure can be configured to a higher value by the user.</p>
<b>Documentation</b>	<p>Updated Assuria Auditor RA Installation Guide and Assuria Auditor RA Users Guide are available for download from AssuriaOnline.</p>
<b>Readme file</b>	<p>Users are urged to read the readme file before installing this software.</p> <p>The contents of the readme file are:</p> <ol style="list-style-type: none"><li>1. Installation Environment</li><li>2. Platforms Supported</li><li>3. Installation Pre-requisites</li><li>4. Port numbers used</li><li>5. Updating from a previous release</li><li>6. Changes to Linux host configuration settings</li><li>7. Security Content</li><li>8. Concurrent Scans</li><li>9. Documentation</li><li>10. Support</li><li>11. Known Issues</li><li>12. Release history</li></ol>
<b>Upgrading from RA previous Releases</b>	<p>If an attempt is made to install release 1.5 when an earlier release is already present an error will be displayed and the installation terminated.</p> <p>The correct procedure for updating an installation is to uninstall the previous release before installing release 1.5. This procedure will retain all the licence, credential, host and session information that has been created.</p>

**Assuria Auditor RA Bulletins**

Assuria Bulletins 99 and 101 introduced Assuria Auditor RA and include an overall description of Assuria Auditor RA.

The Bulletins are available at:

[http://www.assuria.com/Bulletins/Assuria\\_Bulletin\\_99\\_-\\_Assuria\\_Auditor\\_Remote\\_Adapter\\_Release\\_1-6.pdf](http://www.assuria.com/Bulletins/Assuria_Bulletin_99_-_Assuria_Auditor_Remote_Adapter_Release_1-6.pdf)

[http://www.assuria.com/Bulletins/Assuria\\_Bulletin\\_101\\_Assuria\\_Auditor\\_Remote\\_Adapter\\_Rel\\_1.1.pdf](http://www.assuria.com/Bulletins/Assuria_Bulletin_101_Assuria_Auditor_Remote_Adapter_Rel_1.1.pdf)

**Licensing**

Licensing is on per Host scanned basis. An additional Assuria Auditor RA key will be required for the Assuria Auditor RA system.

If the count of Hosts is exceeded the Assurai Auditor RA GUI allows currently configured Hosts to be marked as obsolete and new Hosts added.

**Installation Environment**

The current release of the Assuria Auditor RA must be run on a computer running Windows Server 2003 Service Pack 2 and be installed alongside the Assuria Auditor Console at AutoUpdate level #104 or later.

**Note:** If any users are using MSDE as the Auditor Console database they will need to upgrade to SQL Server Express in to run RA.

Installation is described in the Assuria Auditor RA Installation Guide.

**Security content**

The check content for Windows Server 2003 and Windows Server 2008 in this release of Remote Adapter is compatible with that used for host based scanning with agents updated with AutoUpdate #98 and for Red Hat Enterprise Linux 5 at AutoUpdate #104.

**Support**

Assuria Support is available to help you make the most of your Assuria products.

For help with Assuria Auditor RA or for any advice regarding the use or deployment of Assuria Auditor RA please contact Assuria Support or send an email to 'support@assuria.com'.

Assuria Limited, Science & Technology Centre, The University of Reading, Earley Gate, Reading, RG6 6BZ, UK.

Telephone +44 118 935 7395 Fax +44 118 926 7917 Web [www.assuria.com](http://www.assuria.com)

© Copyright 2010 Assuria Limited. All rights reserved.